

# Alive

2 BHK COMPACT HOMES AT BALEWADI

**Site address :** Survey No. 3/3 - 3/4, Opp. Bharati Vidyapeeth School,  
Next to PMC Bank, Main Balewadi Road, Balewadi, Pune 411 045.

a CANWILL creation © 88888 09292



**NIMANI CONSTRUCTIONS**  
Come home to quality

#### **Nimani Constructions**

**Office :** 1, Venkatesh Meher, ICICI ATM Building, 1187/22,  
Shivaji Nagar, Ghole Road, Pune - 411 005.

**Contact :** +91 98508 38308 / +91 98220 32312 | **Fax :** +91 20 6620 3873

**Email :** sales@nimaniconstructions.com | nimaniconstructions@gmail.com

**Website :** www.nimaniconstructions.com

# Alive

2 BHK COMPACT HOMES AT BALEWADI

# LIVE A HAPPY LIFE

Note : This brochure is purely conceptual and is designed in good faith to give you a fair and overall view of the project and is not a legal offering, nor will it be a part of any agreement. Photographs are not necessarily comprehensive or current. Nothing contained in this brochure will take precedence in the final agreement. Number of buildings, areas, flats / units, amenities, specifications, floors, roads, open space etc. may be revised.

Promoters reserve the right to amend layouts, plans, elevations, designs, specifications, amenities, areas etc. without prior notice. The use of clubhouse shall be strictly in accordance with the rules and regulations. "Future development" may consist of high-rise buildings.

*Alive*

2 BHK COMPACT HOMES AT BALEWADI

## WHAT'S OUT THERE

We want you to experience life so as to live it to the fullest.  
The sun, the rain, the breeze on your face, dusks and the dawns,  
colours of the sky to the shades of nature...  
everything and that is what we are offering... A Happy Life.



# COME TO LIFE

Everyone wants their home to be full of positivity, happiness, joy and most importantly - full of life. Presenting Alive, 2 BHK compact homes at Balewadi, where we have adorned every corner with life. Be it any specification inside the house or any amenity outside, it's made infested with... Life.



## 2 BHK APARTMENTS



## FLOOR PLAN 1<sup>st</sup>, 3<sup>rd</sup> & 5<sup>th</sup> Floors



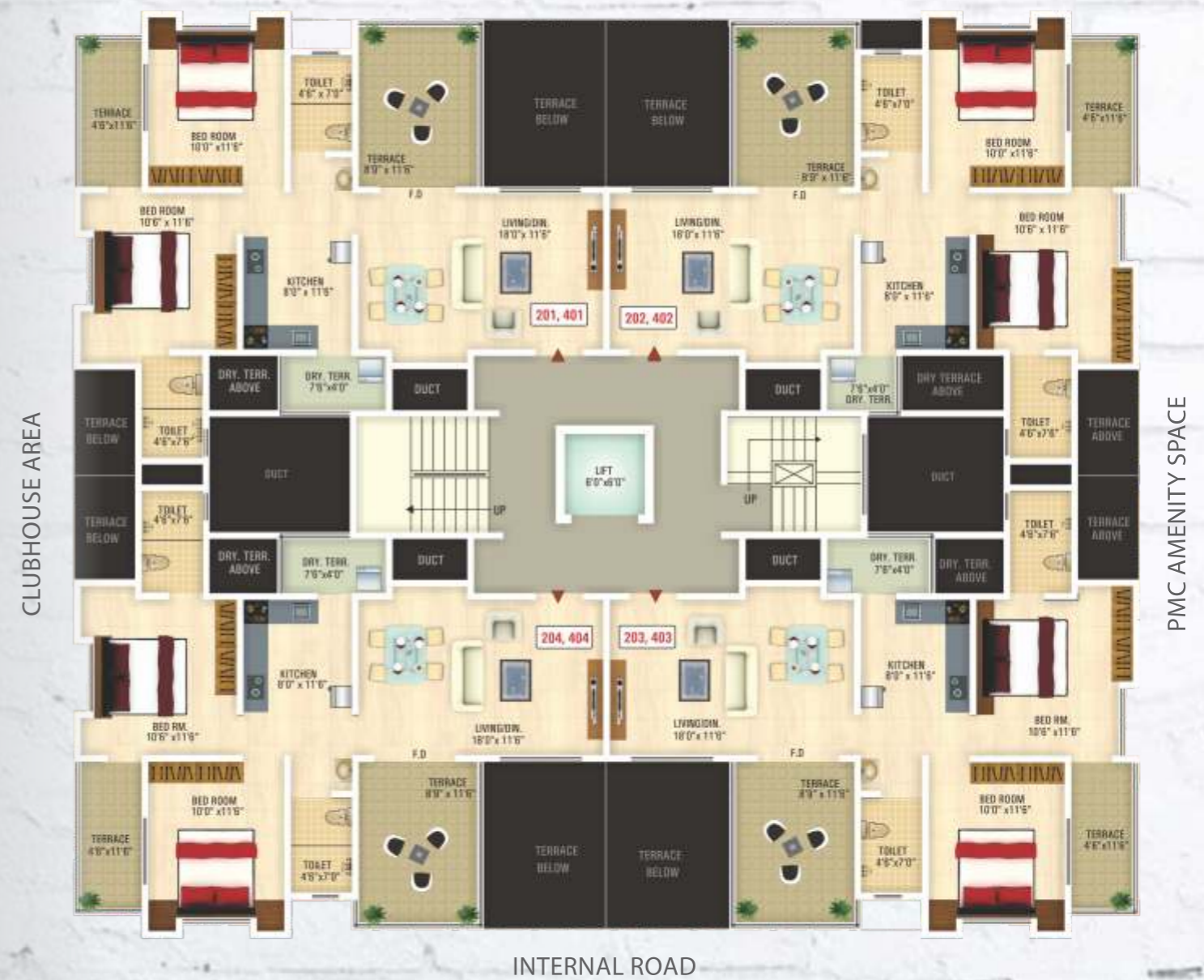
Flat No.	Type	Carpet Area (Sq Ft)	Terrace Area (Sq Ft)	Saleable Area (Sq Ft)
101, 102, 103, 104, 301, 302, 303, 304, 501, 502, 503, 504	2 BHK	657 Sq Ft	163 Sq Ft	1066 Sq Ft



## 2 BHK APARTMENTS



## FLOOR PLAN 2<sup>nd</sup> & 4<sup>th</sup> Floors



Flat No.	Type	Carpet Area (Sq Ft)	Terrace Area (Sq Ft)	Saleable Area (Sq Ft)
201, 202, 203, 204, 401, 402, 403, 404	2 BHK	657 Sq Ft	152 Sq Ft	1052 Sq Ft



## 2 BHK PENTHOUSE



## FLOOR PLAN 6<sup>th</sup> Floor



Flat No.	Type	Carpet Area (Sq Ft)	Terrace Area (Sq Ft)	Saleable Area (Sq Ft)
601	2 BHK Penthouse	667 Sq Ft	1051 Sq Ft	2233 Sq Ft
602, 603	2 BHK	657 Sq Ft	152 Sq Ft	1052 Sq Ft



# COME TO CHERISH

At Alive, we offer you an unmatched life which has been planned meticulously, for you to experience and enjoy the every nuance of it, to the fullest. The whole project is a bouquet of life's choicest delights adorned with amenities that you'll cherish for a life time.



# COME TO LIVE

At Alive, we have made sure that right from the first glance, to the first step, to the last and final look just before you decide, you'll find our homes nothing but delightful.

## SPECIFICATIONS:

**RCC** : Earthquake resistant framed structure

**BRICKWORK** : Internal & External 6" thick high quality bricks

**PAINTING** : Durable Ace Paints for External Walls & OBD for internal walls

**TERRACE RAILING** : Stainless Steel Railing with Toughened Glass

**FLOORING** : Double Charged Vitrified Tiles for Entire Flat with Skirting. Anti Skid Matt finish tiles in Terrace and Bathrooms

**DESIGNER BATHROOM** : Concealed plumbing with High Quality Sanitary Ware, Jaquar or equivalent fittings & fixtures. Designer tiles for entire bathroom up to slab level along with decorative granite door frames. Provision for Geyser in all Bathrooms

**KITCHEN** : Granite kitchen platform & service counter with stainless Steel Sink. Designer Tiles up to Slab Level behind platform. Provision for Exhaust Fan and Water Purifier in kitchen. Dry balcony with provision for washing machine

**DOORS** : Wooden frame with decorative main entrance door. French/ Sliding doors for Terraces

**WINDOWS** : 2/3 Tracked Powder Quoted Aluminium Windows, Sliding Glass & Mosquito Net Shutter with safety Grills. Granite sill frames for windows

**ELECTRIFICATION** : 3 Phase connection in all Apartments. Concealed electrification with High Quality Wiring, Schneider Electric Make or equivalent DB with RCCB + MCB's & Modular Switches. Provision of TV, AC, Telephone and Data Point in Living & Master Bedroom. Provision for invertors

**VDP** : Video Door Phone of standard make

**ELEVATORS** : Stainless Steel Finish centre opening Automatic Elevator along with battery backup

**FIRE HYDRANT** : Sufficient provision for Fire Fighting in case of emergency with adequate water supply as per PMC Norms

**SOLAR WATER SYSTEM**: as per PMC norms

## AMENITIES

- Entry & Exit gates with Security Cabin
- Decorative Entrance Lobby
- Club House with Gymnasium
- Dedicated Senior Citizen Sitting area
- Well Equipped Children Play Area
- Party Lawn
- Walking track
- Community Hall
- Concrete/paved internal road
- Elegant Compound Wall with lush Green Plantation along the periphery



# COME EXPERIENCE

At Alive, we welcome you to experience the life that we have woven for you, where your preference is our direction, your choice our command and your delight our prize.

## ALIVE CREDITS



**Project Architect**  
P.R. Nadkarni  
☎ +91 20 2543 2949



**Structural Consultant**  
Suhas G. Joshi  
☎ +91 20 2453 3556



**Landscape Consultant**  
Design Terra (Arch. Vikas Labba)  
☎ +91 20 6500 2777



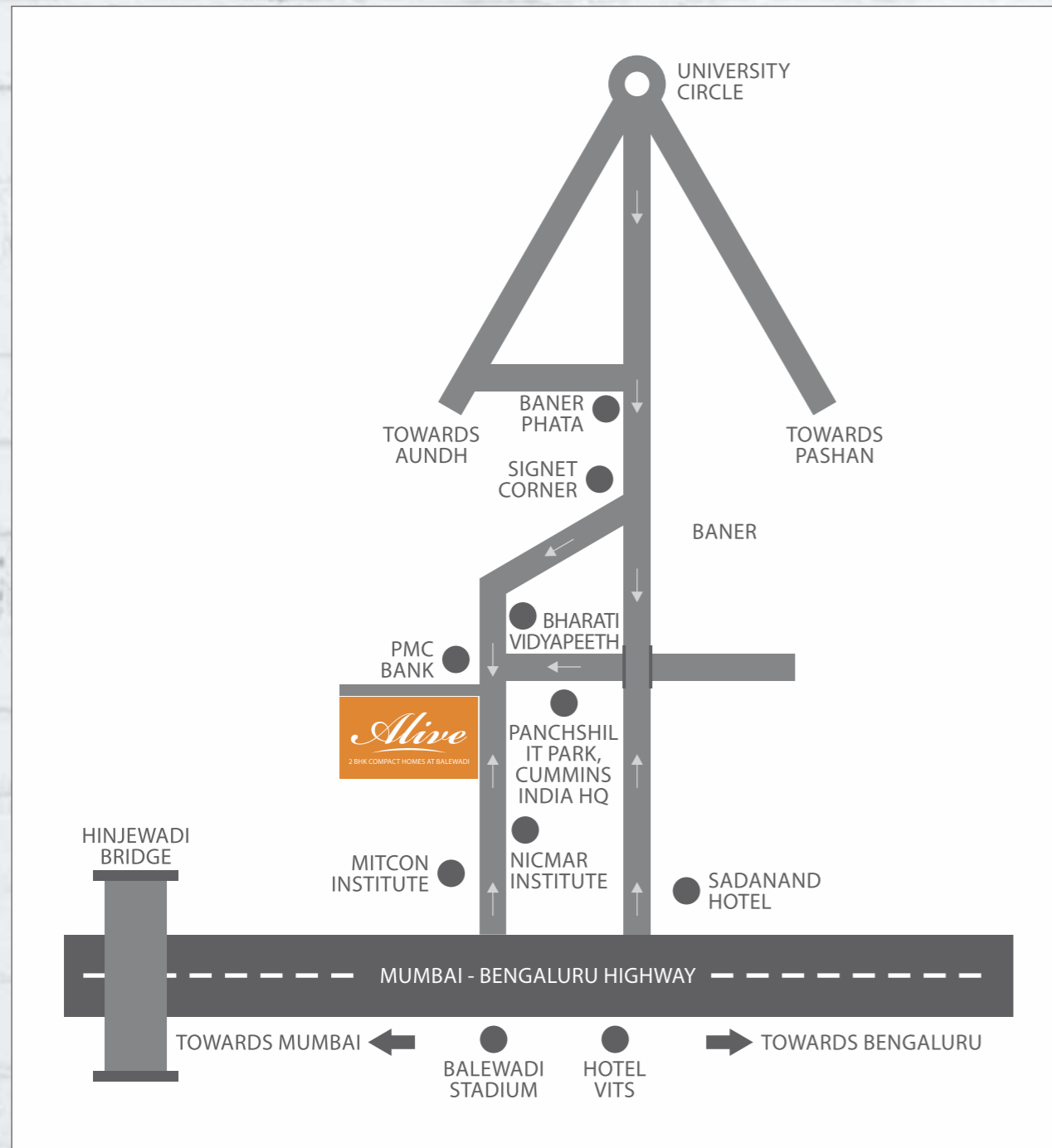
**Look & Elevation**  
Atelier Graphics  
(Arch. Anupama Bhandekar)  
☎ +91 20 2544 9450 / 51




**Project Branding**  
Can & Will  
☎ +91 88888 09292



## LOCATION MAP



## KEY DISTANCES


-  Pune Airport - 20 Kms.
-  Balewadi Sports Stadium - 2.5 Kms.
-  Pune Railway Station - 14.5 Kms.
-  Hinjewadi IT Park - 8.5 Kms.
-  University Circle - 8 Kms.
-  Chandni Chowk - 12.5 Kms.

## OUR OTHER PROJECTS




**alive**

2 BHK APARTMENTS,  
PIMPLE NILAKH, PUNE  
(COMPLETED & SOLD OUT)



**Swapnakunj**  
-Akkalkot Road-

46 ACRE TOWNSHIP OF  
RESIDENTIAL & COMMERCIAL SPACES,  
SOLAPUR





**AP**  
**ARIHANT PARK**

2 & 3 BHK APARTMENTS  
SOLAPUR